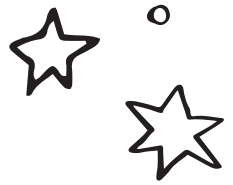


Welcome to the SACE

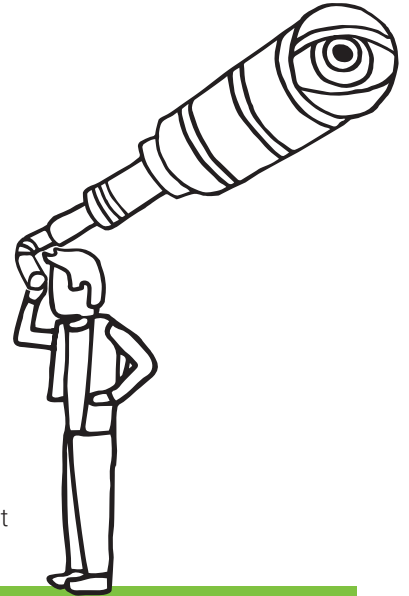


The South Australian Certificate of Education (SACE) is a modern, internationally-recognised secondary school qualification designed to equip you with the skills, knowledge, and personal capabilities to successfully participate in our fast-paced global society.

Learning at the pace of change

The SACE has evolved to provide you with **more flexibility** to choose subjects that reflect your interests, skills, and career goals, using a combination of SACE subjects, vocational education and training (VET), community learning, university, and TAFE studies.

SACE subjects are made up of investigations, performances, and other assessment tasks to demonstrate your skills, knowledge, and personal capabilities throughout the year. Some subjects will have an end-of-year exam **worth a maximum of 30%** of the overall grade.



Your SACE journey

To complete the qualification, you will need to attain **200 credits** from a selection of Stage 1 and Stage 2 subjects. A 10-credit subject is usually one semester of study, and a 20-credit subject is usually over two semesters. **Here's how it works.**

COMPULSORY SUBJECTS

50 credits

- The Personal Learning Plan (PLP) (10 credits)
- Literacy requirement (20 credits) demonstrated from a range of English subjects at Stage 1 or Stage 2
- Numeracy requirement (10 credits) demonstrated from a range of Mathematics subjects at Stage 1 or Stage 2
- The Research Project (10 credits)



STUDENT SELECTED SUBJECTS

90 credits

Choose and successfully complete a selection of Stage 1 and Stage 2 subjects, recognised VET courses, or community learning.



60 credits

Choose and successfully complete a selection of Stage 2 or VET subjects worth at least 60 credits in total.

Stage 2 subjects are externally assessed by the SACE Board of South Australia.

The SACE is flexible and your schedule may differ depending on your school. The majority of students in South Australia will start their journey with the **Personal Learning Plan in Year 10**, their selection of **Stage 1 subjects in Year 11** (including the compulsory Maths and English choices), and their selection of **Stage 2 subjects in Year 12** (including the Research Project). To view all subjects offered by SACE visit sace.sa.edu.au

EXAMPLE OF ACHIEVING A MINIMUM OF 200 CREDITS

50 credits - compulsory

Personal Learning Plan (10 credits)

Stage 1 General Mathematics (10 credits – one semester)

Stage 1 Essential English (20 credits)

Stage 2 Research Project (10 credits)

Min. 90 credits

Stage 1 Biology (20 credits)

Stage 1 Italian continuers (20 credits)

Stage 1 Food and Hospitality (20 credits)

Stage 2 Food and Hospitality (20 credits)

Stage 1 VET: Certificate II in Food Processing (min. 40 credits)

Min. 60 credits

Stage 2 Biology (20 credits)

Stage 2 Italian continuers (20 credits)

Stage 2 Essential English (20 credits)

How to get an ATAR?

You are eligible for an Australian Tertiary Admissions Rank (ATAR) if you achieve 90 credits in Stage 2 (see above example). **The South Australian Tertiary Admissions Centre (SATAC) has responsibility for calculating the ATAR.** For more information about the ATAR (including scaling), go to satac.edu.au



What kind of learner are you?

The SACE caters for practical and theory, hands-on and action-based learning both in and outside school.

You are encouraged to choose subjects that suit you and will open doors to a range of careers within your area of interest.

You will have the opportunity to explore your interests, strengths, subject choices, and style of learning during the **Personal Learning Plan** at the beginning of your SACE journey.

VET options are available at both Stage 1 and Stage 2 and include a wide range of industry areas, including construction, automotive, electrotechnology, hospitality, community services, health and information technology.

In negotiation with your school, you can choose to combine study and part-time work, a traineeship, or school-based apprenticeship.

The SACE Board offers **Modified Subjects** at both Stage 1 and 2 for eligible students with identified significant disabilities.

Making sure it's fair

Your work is assessed against the performance standards outlined for each subject.

Teachers and assessors use these standards to determine how well you have demonstrated your learning, and apply a grade:

From A to E for Stage 1 (C or higher to pass)

From A+ to E- for Stage 2 (C- or higher to pass)

To ensure your work is marked fairly, thousands of samples of student work are reviewed to ensure that assessment decisions are consistent with the performance standards for the subject across the state. These processes are called **marking** and **moderation**.

If something happens during your journey

If your learning is significantly disrupted, special provisions may be granted by your school, on a short-term or long-term basis, to allow for adjustments in assessment so you can demonstrate the required knowledge and performance standards to complete the subject.

The SACE Board and schools work in partnership to ensure **special provisions** are available for exceptional circumstances.

You will learn at the pace of change with 7 capabilities that equip you to live and work successfully in the 21st century.



LITERACY



NUMERACY



INFORMATION AND COMMUNICATION TECHNOLOGY



CRITICAL AND CREATIVE THINKING



PERSONAL AND SOCIAL



ETHICAL UNDERSTANDING



INTERCULTURAL UNDERSTANDING

Need more information?

The SACE Board provides detailed information on subjects, assessment, modified subjects, special provisions, and results. Visit sace.sa.edu.au for more information.

Your school's SACE coordinator and other school leaders can offer advice and information on subjects being offered that best suit your interests and your plans for further education and training.



Government
of South Australia



South Australian
Certificate of Education

